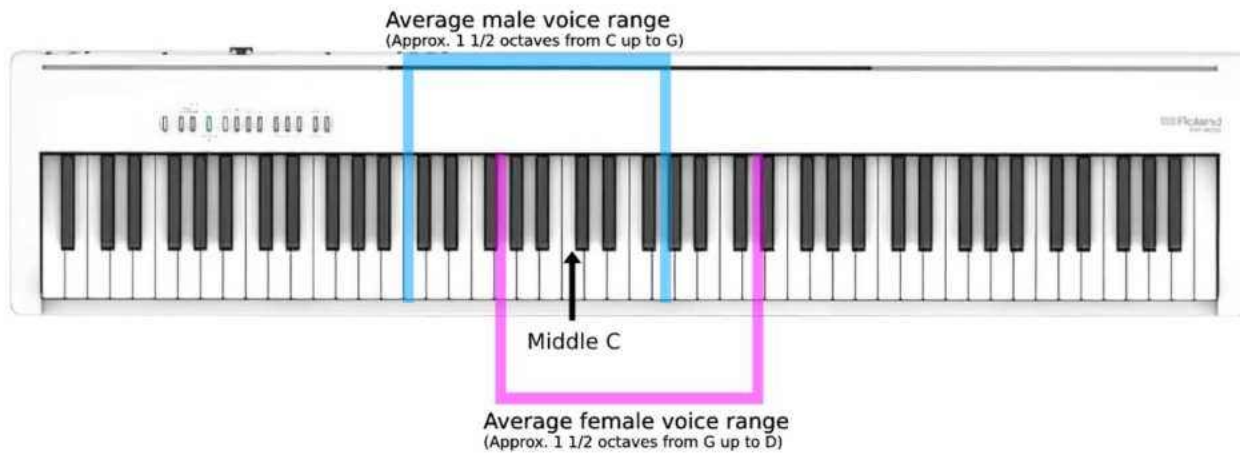


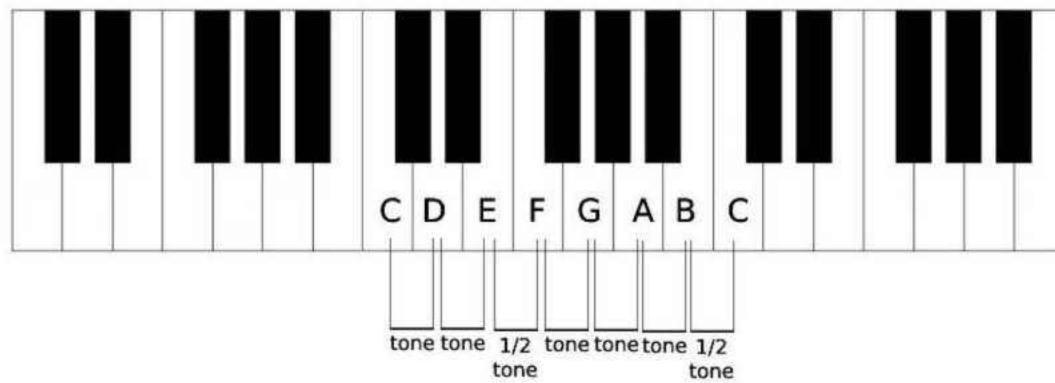
# Guitar Music Theory for Beginners



# Average Voice Range



# T-T-S-T-T-S



# C major scale on the guitar

## C Major Scale

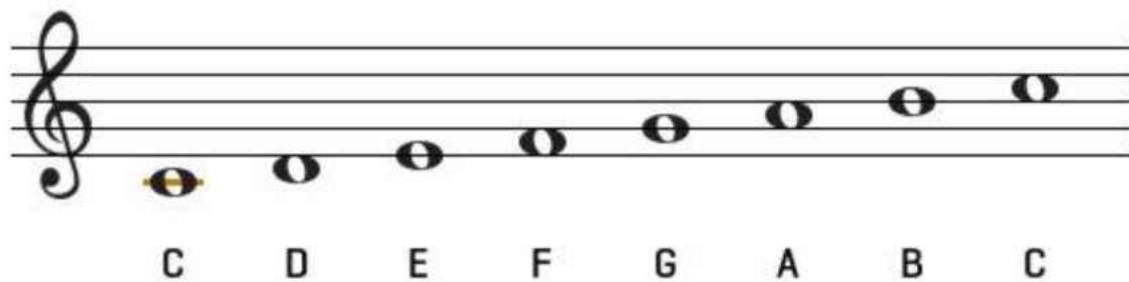
C D E F G A B C B A G F E D C

The musical notation shows the C major scale on a single staff in treble clef. The notes are C, D, E, F, G, A, B, C, B, A, G, F, E, D, C. The fret numbers for each note are: C (3), D (0), E (2), F (3), G (0), A (2), B (0), C (0), B (2), A (0), G (3), F (2), E (0), D (3).

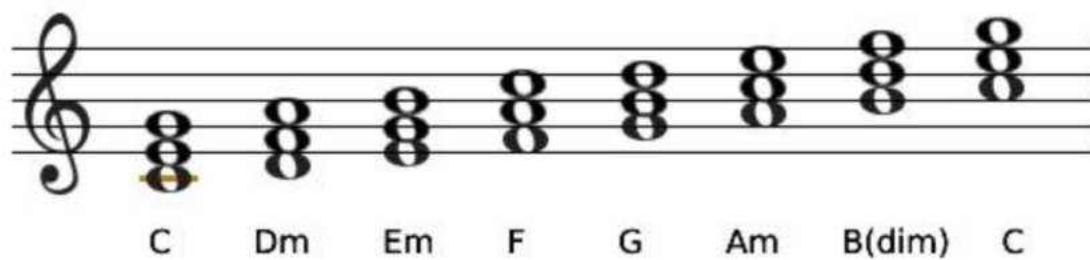
TAB 3 0 2 3 0 2 0 1 0 2 0 3 2 0 3

The guitar tablature shows the fret numbers for each note: 3, 0, 2, 3, 0, 2, 0, 1, 0, 2, 0, 3, 2, 0, 3.

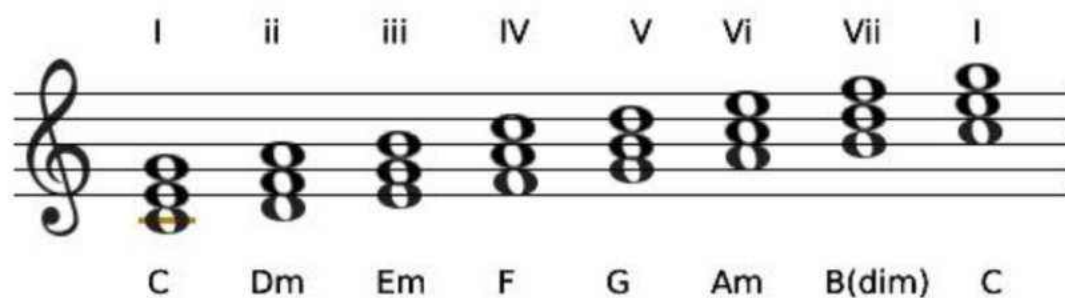
## C major key signature



## Chords in the Key of C



## Chords in the Key of C



## Key Change Chord Chart

Major Key	<b>I</b>	<b>ii</b>	<b>iii</b>	<b>IV</b>	<b>V</b>	<b>vi</b>	<b>vii<sup>o</sup></b>
A	A	Bm	C#m	D	E	F#m	G#dim
B	B	C#m	D#m	E	F#	G#m	A#dim
C	C	Dm	Em	F	G	Am	Bdim
D	D	Em	F#m	G	A	Bm	C#dim
E	E	F#m	G#m	A	B	C#m	D#dim
F	F	Gm	Am	Bb	C	Dm	Edim
G	G	Am	Bm	C	D	Em	F#dim
Minor Key	<b>i</b>	<b>ii<sup>o</sup></b>	<b>III</b>	<b>iv</b>	<b>v</b>	<b>VI</b>	<b>VII</b>
Am	Am	Bdim	C	Dm	Em	F	G
Bm	Bm	C#dim	D	Em	F#m	G	A
Cm	Cm	Ddim	Eb	Fm	Gm	Ab	Bb
Dm	Dm	Edim	F	Gm	Am	Bb	C
Em	Em	F#dim	G	Am	Bm	C	D
Fm	Fm	Gdim	Ab	Bbm	Cm	Db	Eb
Gm	Gm	Adim	Bb	Cm	Dm	Eb	F

# Put it into practise!

Work on transposing the song let it Be from the Key of C to the key of G.

Let it Be Chord Progression: C-G-Am-F-C-G-F-C

Roman Numerals: \_\_\_\_\_

Chords in the Key of G: \_\_\_\_\_