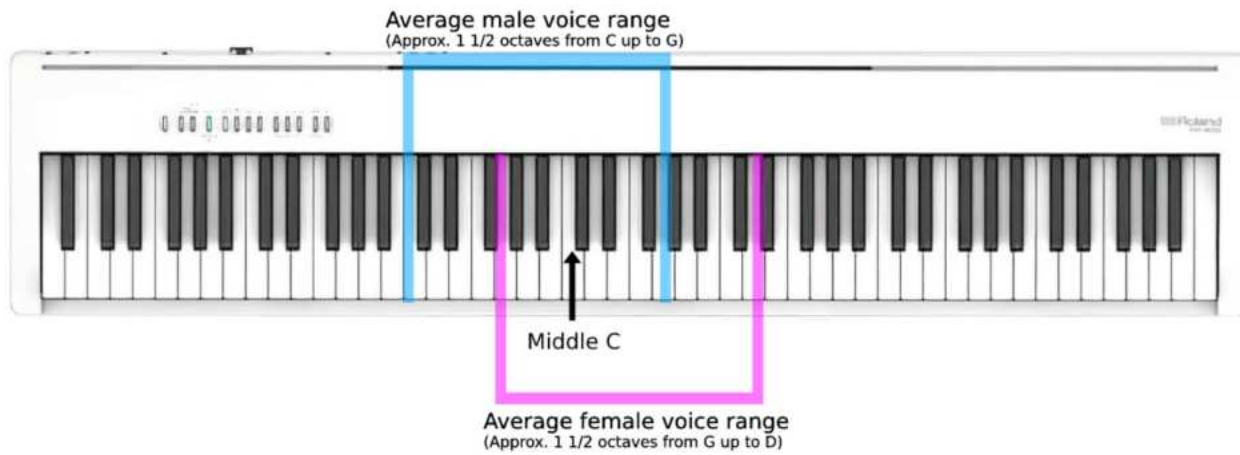


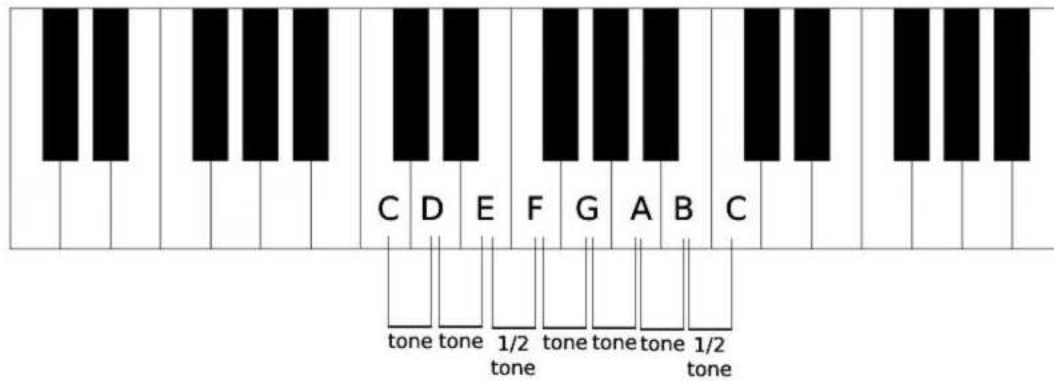
Ukulele Music Theory 101



Average Voice Range

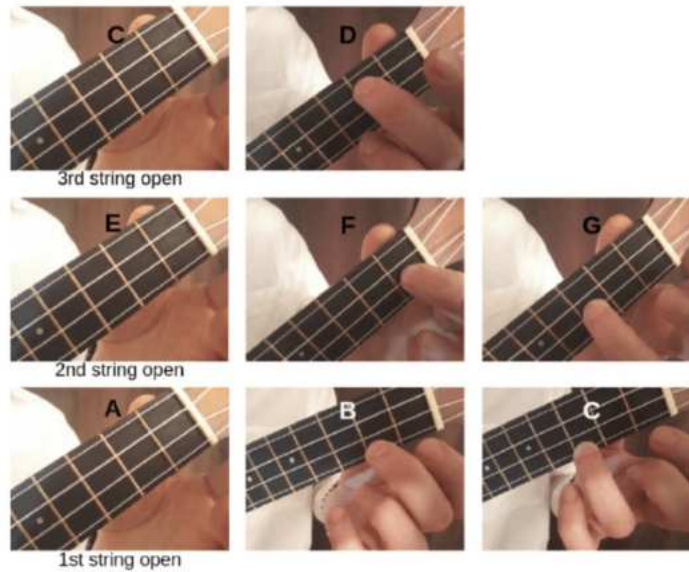


T-T-S-T-T-T-S

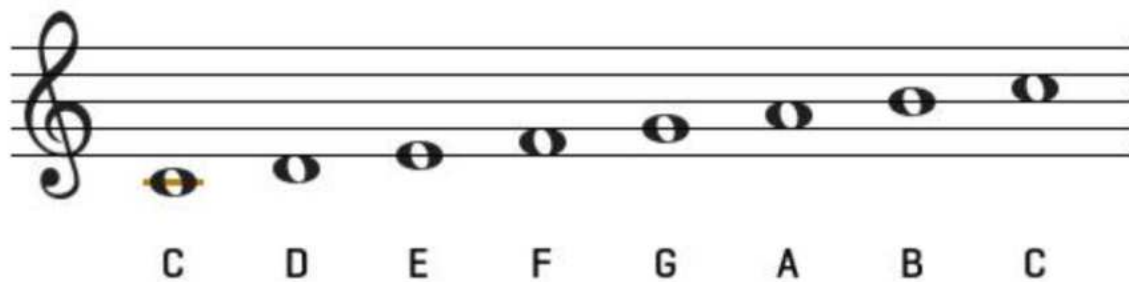


C major Scale on the Ukulele

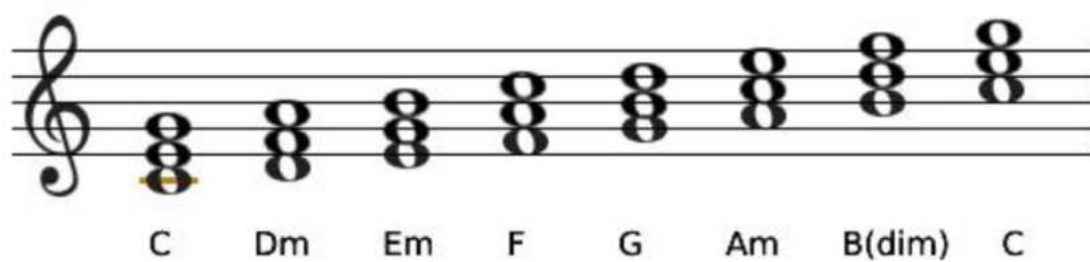
C Major Scale



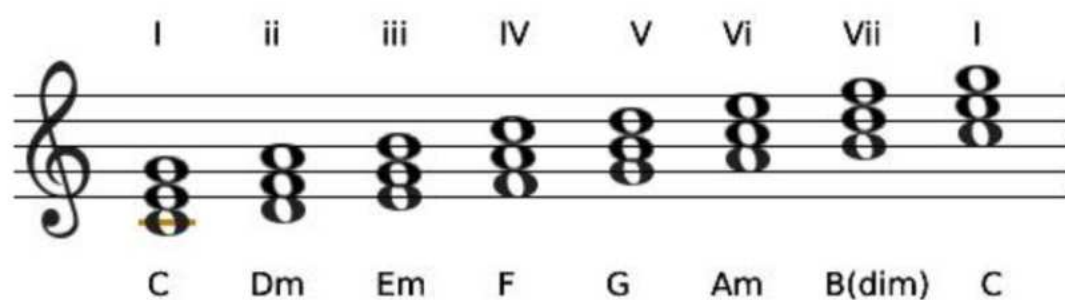
C major key signature



Chords in the Key of C



Chords in the Key of C



Key Change Chord Chart

Major Key	I	ii	iii	IV	V	vi	vii^o
A	A	Bm	C#m	D	E	F#m	G#dim
B	B	C#m	D#m	E	F#	G#m	A#dim
C	C	Dm	Em	F	G	Am	Bdim
D	D	Em	F#m	G	A	Bm	C#dim
E	E	F#m	G#m	A	B	C#m	D#dim
F	F	Gm	Am	Bb	C	Dm	Edim
G	G	Am	Bm	C	D	Em	F#dim
Minor Key	i	ii^o	III	iv	v	VI	VII
Am	Am	Bdim	C	Dm	Em	F	G
Bm	Bm	C#dim	D	Em	F#m	G	A
Cm	Cm	Ddim	Eb	Fm	Gm	Ab	Bb
Dm	Dm	Edim	F	Gm	Am	Bb	C
Em	Em	F#dim	G	Am	Bm	C	D
Fm	Fm	Gdim	Ab	Bbm	Cm	Db	Eb
Gm	Gm	Adim	Bb	Cm	Dm	Eb	F

Put it into practise!

Work on transposing the song let it Be from the Key of C to the key of G.

Let it Be Chord Progression: C-G-Am-F-C-G-F-C

Roman Numerals: _____

Chords in the Key of G: _____